

# Technical Sheet

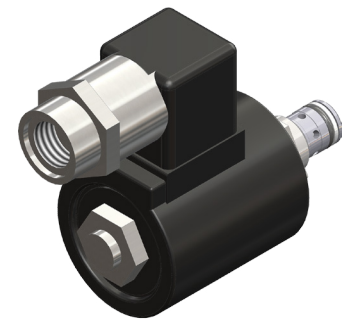
## MCZ2501 Oil Zone Valve Replacement

### Overview

Bijur Delimon has offered two versions of our Zone Valve series MCZ2501 for oil applications; an option for installation at the inlet of M2500 valves and an option for remote mounting. These cartridge valves fit into an industry-standard cavity, which is compact in size but it is not widely supported by vendors.

In addition, for several years our European locations have also offered another series of Zone Valves (also for oil applications) which use a different cavity that has broader industry support.

In our continued efforts to standardize products across regions, Bijur Delimon has discontinued the MCZ2501 and will now exclusively use the European solution for new installations, although a limited range of retrofit replacements will be available to support existing MCZ2501s already installed.



MCZ2501 Series

### New Installations

New installations can be serviced either from an M2500G inlet or from a remote body. Available options are in the chart below.

Please note that these new valves do not fit into the MCZ2501 cavity, nor do replacement components interchange with the older valves.

Part #	Description	Image
38152M115	Valve & coil assembly, 24VDC, DIN43650A	
38152M116	Valve & coil assembly, 115VAC, DIN43650A	
38152M117	Valve & coil assembly, 230VAC, DIN43650A	
55892	connector, DIN43650-A to PG11	
MCI2504ZC3G	M2500G zone inlet body, 1/4" BSPP	
85467	Remote zone valve body, SAE 8 Ports	
38152M114	Replacement cartridge valve	
38152M111	Replacement solenoid coil, 24VDC	
38152M091	Replacement solenoid coil, 115VAC	
38152M112	Replacement solenoid coil, 230VAC	

BIJUR DELIMON  
INTERNATIONAL

+41 (32) 373 46 64 Tel  
+41 (79) 336 87 47 Mobile  
+41 (32) 322 18 87 FAX

[WWW.BIJURDELIMON.CH](http://WWW.BIJURDELIMON.CH)

Badenerstrasse 5c  
CH-5442 Fislisbach

# Technical Sheet

## MCZ2501 Oil Zone Valve Replacement

### Retrofit Replacements

Bijur Delimon has discontinued making the M2500 inlet bodies for the MCZ2501 series valves, as well as remote bodies. We will offer a limited selection of drop-in replacement valve/coil assemblies that fit into existing MCZ2501 inlets and remote bodies, per the chart below.

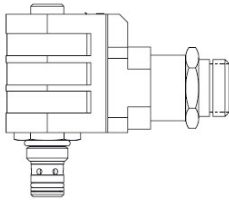
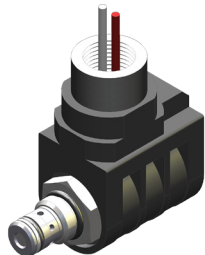
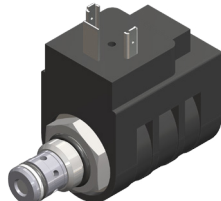
Part #	Voltage	Connection	Image
85453-BH11	110VAC	Brad Harrison 3-pin	
85453-CL11	110VAC	1/2" conduit, w/ wire leads	
85453-HC24	24VDC	DIN43650-A	

Chart below compares the MCZ2501 specifications vs. the replacement series.

Specification	MCZ2501A	MCZ2501F	85453 Series
Max pressure	3000 PSI (207 bar)	1500 PSI (103 bar)	4000 psi (276 bar)
Leakage rate	0 to 5 drops/min	Negligible	0 to 5 drops/min
Oil viscosity	3 to 647 cSt	3 to 647 cSt	3 to 647 cSt
Temp range	-40° to 250°F (-40° to 120°C)	32° to 160° F (0° to 70° C)	-40° to 250°F (-40° to 120°C)
Seals	Buna or Viton	Buna or Viton	Buna

BIJUR DELIMON  
INTERNATIONAL

+41 (32) 373 46 64 Tel  
+41 (79) 336 87 47 Mobile  
+41 (32) 332 18 87 FAX

[WWW.BIJURDELIMON.CH](http://WWW.BIJURDELIMON.CH)

Badenerstrasse 5c  
CH-5442 Fislisbach